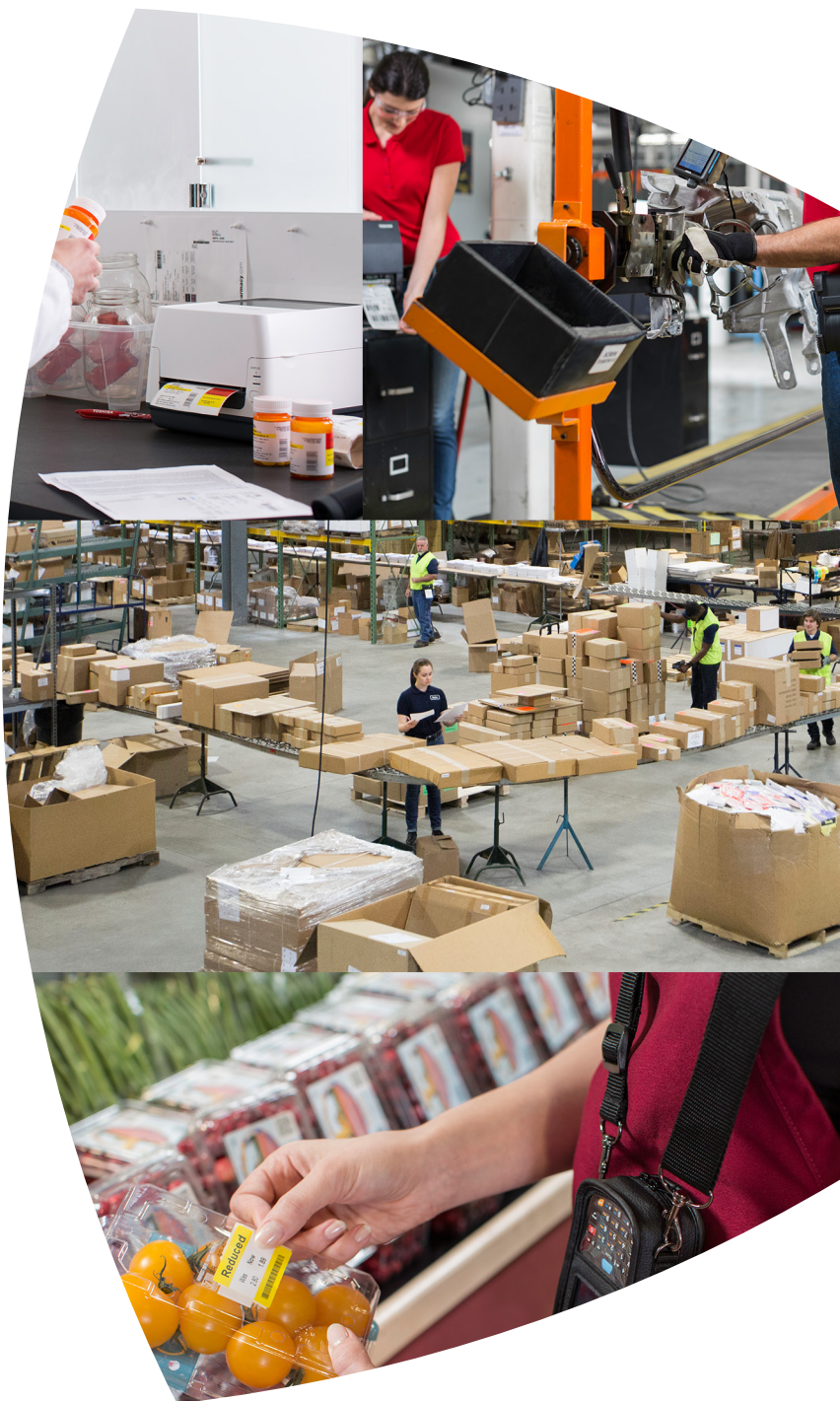


# LABELS

## Overview

---

- > Toshiba offers a range of over 250 standard variants in four materials.
- > All labels have been tested to provide optimum performance on Toshiba's printer range.
- > Our most popular sizes are held in stock for super quick delivery, even in small quantities.



# THE RIGHT LABEL FOR YOUR NEEDS

Labels are used in a vast range of applications, from occasional printing on address labels to mass-production in industrial environments - the possibilities are endless and so are the choices. Our selection of over 250 standard items lets you find the ideal label to best suit your application. All our labels have passed the strictest quality control tests and are approved for use in Toshiba devices to ensure the very best print quality.

Our labels come in four categories - two for thermal transfer applications and two for direct thermal applications.

## > Transfer Standard

- Surface-sized, wood-free supercalandered paper.
- Uncoated label paper for thermal-transfer printing in logistics and transportation end-use areas.
- Offers good thermal transfer image quality.

## > Transfer Premium

- White, matt, off-machine coated, wood-free supercalandered label paper.
- Designed for multi-purpose thermal-transfer printing with good barcode resolution and good ambient temperature performance.
- Suitable for most thermal-transfer printers.

## > Direct Eco

- Non-top coated, chemical-thermal paper with high print resolution properties. Limited resistance to thermal image scratching or smudging.
- Designed for applications where high direct thermal print resolution and good adhesion to most common substrates are needed.
- Made for direct-thermal printing.

## > Direct Top

- A top and reverse side barrier coated paper with a standard sensitivity thermal coating produced entirely without BPA-based chemistry.
- The optimal product for a wide range of applications where good environmental resistance of the thermal printed image is needed and labelling takes place at room temperature.
- Made for high speed printers up to 200 mm/sec.



# FINDING THE PERFECT MATCH

With so many labels to choose from, it can be difficult to find the perfect match. The table below lists all label sizes and shows you what paper type they are available in. If you are not sure which label is right for you, please contact your local Toshiba partner.

## Toshiba labels for printers with a 76 mm internal core

width x length	Transfer Standard	Transfer Premium	Direct Eco	Direct Top
25 x 76 mm	●	●	●	●
39 x 25 mm	●	●	●	●
50 x 74 mm	●	●	●	●
51 x 25 mm	●	●	●	●
57 x 19 mm	●	●	●	●
57 x 32 mm	●	●	●	●
57 x 102 mm	●	●	●	●
60 x 99 mm	●	●	●	●
64 x 25 mm	●	●	●	●
70 x 32 mm	●	●	●	●
70 x 48 mm	●	●	●	●
76 x 25 mm	●	●	●	●
76 x 51 mm	●	●	●	●
76 x 76 mm	●	●	●	●
82 x 140 mm	●	●	●	●
90 x 40 mm	●	●	●	●
100 x 50 mm	●	●	●	●
100 x 100 mm	●	●	●	●
100 x 150 mm	●	●	●	●
102 x 38 mm	●	●	●	●
102 x 48 mm	●	●	●	●
102 x 51 mm	●	●	●	●
102 x 76 mm	●	●	●	●
102 x 102 mm	●	●	●	●
102 x 127 mm	●	●	●	●
102 x 152 mm	●	●	●	●
102 x 165 mm	●	●	●	●
105 x 148 mm	●	●	●	●
148 x 210 mm	●	●	●	●

## Toshiba labels for printers with a 25 mm internal core

width x length	Transfer Standard	Transfer Premium	Direct Eco	Direct Top
25 x 76 mm	●	●	●	●
31 x 22 mm	●	●	●	●
39 x 25 mm	●	●	●	●
50 x 74 mm	●	●	●	●
51 x 25 mm	●	●	●	●
57 x 19 mm	●	●	●	●
57 x 32 mm	●	●	●	●
57 x 51 mm	●	●	●	●
57 x 102 mm	●	●	●	●
70 x 48 mm	●	●	●	●
75 x 35 mm	●	●	●	●
76 x 25 mm	●	●	●	●
76 x 51 mm	●	●	●	●
82 x 140 mm	●	●	●	●
90 x 40 mm	●	●	●	●
102 x 38 mm	●	●	●	●
102 x 48 mm	●	●	●	●
102 x 51 mm	●	●	●	●
102 x 76 mm	●	●	●	●
102 x 102 mm	●	●	●	●
102 x 127 mm	●	●	●	●
102 x 152 mm	●	●	●	●

- = In stock; available in different roll sizes
- = Available in different roll sizes; some sizes may not be in stock
- = In stock
- = Produced on demand; available in different roll sizes
- = Produced on demand
- = Not available

## Which core size is applicable?

	core ø 25 mm	core ø 76 mm
B-EV4	✓	
B-FV4	✓	
B-SA4		✓
B-852		✓
B-EX6		✓
B-EX4		✓
B-SX5		✓
B-SX6		✓
B-SX8		✓

# BENEFITS

- > Toshiba quality for the utmost reliability
- > Large choice of label sizes
- > Can be ordered in small quantities
- > Hardware, software and consumables - all from one source

# ABOUT TOSHIBA TEC

Toshiba Tec Belgium Imaging Systems is part of the globally operating Toshiba Tec Corporation, active in various high-tech industrial sectors.

Toshiba Tec Corporation is a leading provider of information technology, operating across multiple industries - ranging from retail, education and business services to hospitality and manufacturing. With headquarters in Japan and over 80 subsidiaries worldwide, Toshiba Tec Corporation helps organisations transform the way they create, record, share, manage and display information.

# TOGETHER INFORMATION

Together Information is Toshiba's vision for how people and organisations create, record, share, manage and display ideas and data.

It is based on our belief that the most successful organisations are those that communicate information in the most efficient way.

We make that possible through an integrated portfolio of industry-specific solutions, all of which reflect Toshiba's commitment to the future of the planet.



## **TOSHIBA TEC Belgium Imaging Systems**

Z.1. Researchpark 160  
B-1731 Asse-Zellik

### **Telephone**

+32 2 410 21 00

### **E-mail**

bcs.sales@toshibatec-tgis.com

### **Website**

be.toshibatec.eu

